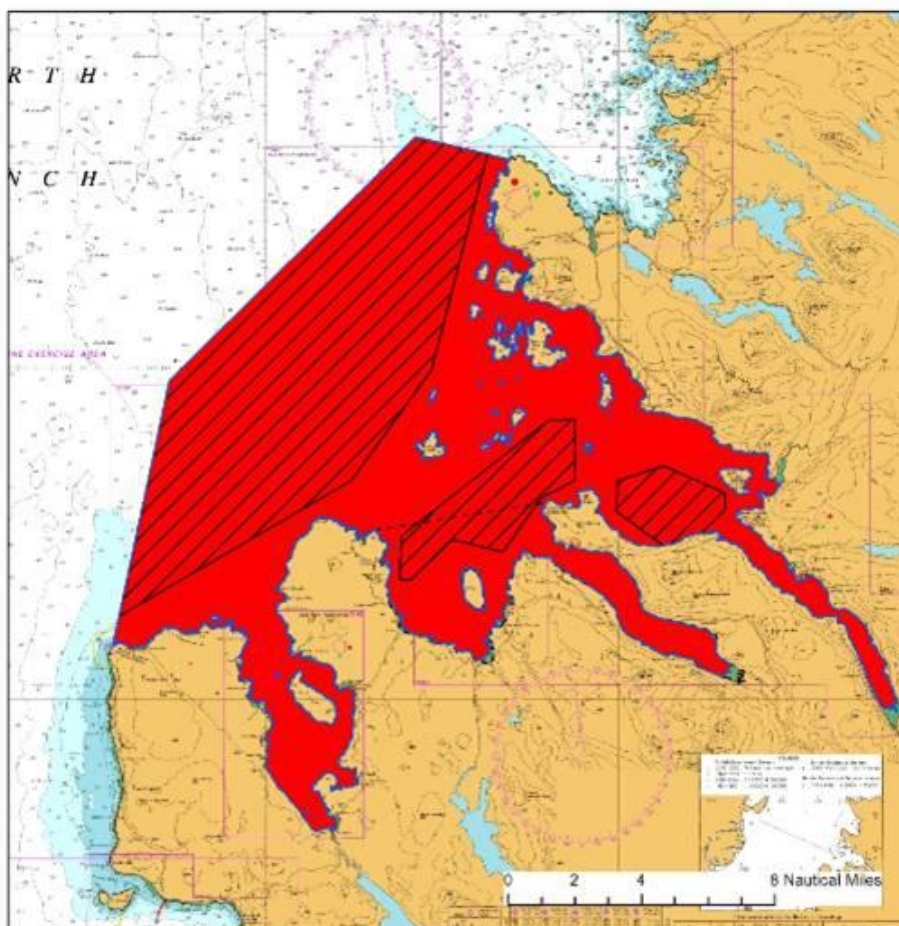


## Proposed fisheries Management Measures for Wester Ross MPA

The map below (from <http://www.gov.scot/Resource/0047/00479038.pdf> ) provides an explanation of proposed measures:

### Appendix 21: Wester Ross MPA Management Measures

Figure A21.1 – Map of proposed measures



#### Wester Ross MPA

-  MPA boundary
-  Little Loch Broom and Gruinard Bay seasonal mobile gear closure
-  derogated areas
-  management area

Within the red area no suction dredging, mechanical dredging, beam trawling, or demersal trawling is permitted.

By way of derogation demersal trawling by vessels of less than 150 gross tonnes is permitted in the black hatched areas.

© Crown Copyright, 2015. All rights reserved. License No. EK001-201404001. Not to be used for Navigation. Projection: Mercator Datum: WGS 1984 Standard Parallel: 58°N Scale 1:250,000

In the red management area ‘no mechanical dredging’ – means –no scallop dredging.

In the derogated area (hatched lines) ‘demersal trawling by vessels of less than 150 gross tonnes’ means that local prawn trawlers (but not dredgers) will continue to have access to fish in these areas.

**Further information can be found on the Scottish Government website, as follows:**

A press release (issued on 11<sup>th</sup> June 2015) can be found here;

<http://news.scotland.gov.uk/News/Progress-for-MPA-network-19e9.aspx>

The report can be found here;

[www.gov.scot/Topics/marine/marine-environment/mpanetwork/MPAMGT/protectedareasmgt](http://www.gov.scot/Topics/marine/marine-environment/mpanetwork/MPAMGT/protectedareasmgt)

This is a temporary publication and a full HTML version is to follow.

Four Draft Marine Conservation Orders have been published today. Scottish Ministers invite written representations from any party on these orders by no later than 23:59 on 12 July 2015.

These can be found here;

[www.gov.scot/Topics/marine/marine-environment/mpanetwork/MPAMGT/protectedareasmgt/conservationorders](http://www.gov.scot/Topics/marine/marine-environment/mpanetwork/MPAMGT/protectedareasmgt/conservationorders)